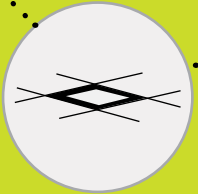


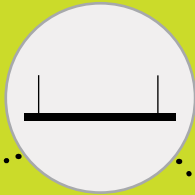


# LED RANGE PRICE LIST

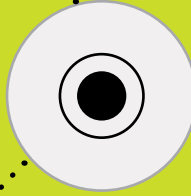
w.e.f. August 2017



**modern workspaces**  
recessed | page 04



**modern workspaces**  
suspended | page 08



**commercial interiors**  
downlighters | page 12



**lighting controls**  
page 16



**cleanroom & sterile areas**  
page 18



**industries**  
page 20



outdoor  
**street lighting**  
page 24



## Driven by Efficiency, Leading by Performance

Since its inception, in 1991 Wipro Lighting has always been associated with new product innovations and unique lighting concepts. Be it from high efficiency LED luminaires and lighting management systems for green buildings, we are the leaders in providing comprehensive energy efficient solutions.

Wipro Lighting is at the forefront in providing smart, intelligent & connected LED lighting solutions for various application areas including modern workspaces, industries, retail, healthcare, pharmaceuticals, roads & highways, landscapes and many more.

We have a single minded focus on enhancing competitive advantage and thereby customer profitability at all times and our commitment to implement green lighting solutions, to create possibilities for a brighter future and a cleaner planet.



outdoor  
**flood lighting**  
page 26



outdoor  
**landscape lighting**  
page 28



**cleanray**  
page 30

# Modern Workspaces

right light for  
cheerful workspaces



**OpusLED** is elegant, fluidic & modern in design with unique floating spherical diffuser and surrounding light chamber that subtly introduces a circular geometry into the ceiling plane.

## OpusLED

**LM 38**  
High efficiency recess mounted LED luminaire



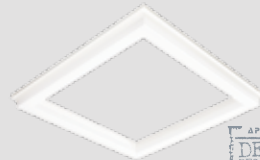
new



Cat No.	System Wattage (W)	CCT (K)	LP (₹)
LM38-461-XXX-57-XX	34	5700	9,790

## VergeLED

**LM 29**  
High efficiency recess mounted versatile LED luminaire



Cat No.	System Wattage (W)	CCT (K)	LP (₹)
LM29-451-XXX-57-XX	33	5700	6,490
LM29-451-XXX-57RCC	33	5700	7,050
LM29-451-XXX-57GRID	33	5700	7,250

RCC suffix denotes suspension mounting for RCC ceiling.  
GRD suffix denotes suspension mounting for modular ceiling.



## LIGHT AROUND YOU

**VergeLED's** minimal design integrates ceiling into the luminaire creating a unique volumetric lighting experience.

## ImmaculateLED Trimless

**CRCO 10**  
Recess mounted LED luminaire with minimalist trim and full diffuser



new

Cat No.	System Wattage (W)	CCT (K)	LP (₹)
CRCO10R038HP57SLAB	31	5700	5,950

For all 2x2 products, frame to be ordered separately for installation in POP/gypsum ceiling.  
Catalogue no. for frame is 9180P01089 LP Rs. 590 | Cutout dimension: 608 mm x 608 mm.

## ImmaculateLED

**CRCO 10**  
Recess/surface mounted LED luminaire with full diffuser



Cat No.	System Wattage (W)	CCT (K)	LP (₹)
CRCO10R038HP57G1	31	5700	5,250
CRCO10S038HP57G1	31	5700	5,650
CRCO10R036HP57G1	33	5700	5,890
CRCO10S036HP57G1	33	5700	6,290

'R' represents recess and 'S' represents surface mounting.

## Modern Workspaces • Recessed

### ImmaculateLED DD

LM 24

Recess mounted LED luminaire with drop down diffuser



Cat No.	System Wattage (W)	CCT (K)	LP (₹)
LM24-391-XXX-57-DD	31	5700	5,650
LM24-421-XXX-57-DD	33	5700	6,290

### ImmaculateLED Platinum

LM 25

Recess mounted slim LED luminaire



Cat No.	System Wattage (W)	CCT (K)	LP (₹)
LM25-361-XXX-65-G1*	36	6500	5,950
LM25-481-XXX-65-G1**	36	6500	6,750

Cutout dimensions: \*570 mm x 570 mm | \*\*270 mm x 1170 mm

### ElateLED

CRCO 10

Recess mounted LED luminaire with full diffuser



Cat No.	System Wattage (W)	CCT (K)	LP (₹)
CRCO10R038HP57GL1	36	5700	5,590

### WaveLED

LM 24

Recess mounted LED luminaire

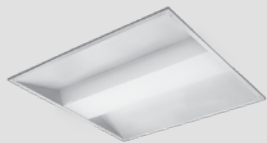


Cat No.	System Wattage (W)	CCT (K)	LP (₹)
LM24-391-XXX-57-G1	31	5700	5,750
LM24-421-XXX-57-G1	33	5700	6,390

### SpacioLED

LM 15

Recess mounted indirect-direct LED luminaire for new age workspaces

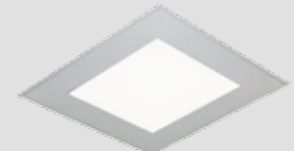


Cat No.	System Wattage (W)	CCT (K)	LP (₹)
LM15-361-XXX-57-XX	32	5700	4,390
LM15-411-XXX-57-XX	35	5700	4,890

### Matrix-ILED

LM 17

Recess mounted LED luminaire



Cat No.	System Wattage (W)	CCT (K)	LP (₹)
LM17-401-XXX-57-XX	30	5700	4,490
LM17-461-XXX-57-XX	33	5700	4,990

For all 2x2 products, frame to be ordered separately for installation in POP/ gypsum ceiling.  
Catalogue no. for frame is 9180P01089 LP Rs. 590 | Cutout dimension: 608 mm x 608 mm.

LED is an ever improving & evolving technology. Wipro is committed to bring you the best in LED technology.



## AxeonLED Recess

LM 34  
Recess mounted linear  
LED luminaire



Cat No.	System Wattage (W)	CCT (K)	LP (₹)
LM34-251-XXX-57-RM	20	5700	7,890
LM34-251XXX-57RMCT	20	5700	7,890

Cutout dimensions: 1188 mm x 60 mm

## AxeonLED Trimless

LM 34  
Recess mounted linear  
LED luminaire



Cat No.	System Wattage (W)	CCT (K)	LP (₹)
LM34-251-XXX-57-TL	20	5700	8,390
LM34-251XXX-57TLCT	20	5700	8,390

Cutout dimensions: 1182 mm x 54 mm

## Aura Plus

CRCO 13  
Recess/surface mounted  
LED luminaire



Cat No.	System Wattage (W)	CCT (K)	LP (₹)
CRCO13R038HP57G1	31	5700	6,790
CRCO13S038HP57G1	31	5700	7,290

'R' represents recess and 'S' represents surface mounting.  
Frame to be ordered separately for installation in POP/gypsum ceiling.

AxeonLED gives the flexibility to choose as per the requirement of available space, blending well with the modern architecture, delivering value in every aspect.

## LineosLED

LM 30  
Linear recess mounted LED luminaire

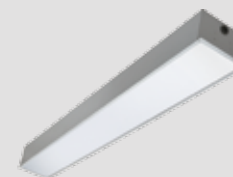


Cat No.	System Wattage (W)	CCT (K)	LP (₹)
LM30-211-XXX-57-XX	21	5700	5,990
LM30-211-XXX-57-CT	21	5700	6,090
LM30-401-XXX-57-XX	32	5700	6,950
LM30-401-XXX-57-CT	32	5700	7,050

Cutout dimensions: 1178 mm x 78 mm

## TZLED

LM 35  
Recess mounted slim LED luminaire  
suitable for TechZone ceiling



Cat No.	System Wattage (W)	CCT (K)	LP (₹)
LM35-381-XXX-57-G1	28	5700	8,690
LM35-381-XXX-57-CT	28	5700	8,790
LM35-761-XXX-57-G1	56	5700	17,090
LM35-761-XXX-57-CT	56	5700	17,190

Cutout dimensions: 1178 mm x 133 mm

Modern Workspaces • Suspended

# Modern Workspaces

do your offices in style



## AxeonLED Drop Down

LM 34

Suspended linear LED luminaire with drop down diffuser



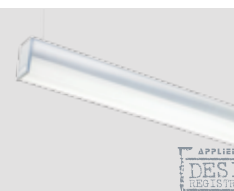
Cat No.	System Wattage (W)	CCT (K)	LP (₹)
LM34-251-XXX-57-DD	20	5700	8,190
LM34-251XXX-57DDCT	20	5700	8,290
LM34-501-XXX-57-DD	40	5700	16,290
LM34-501XXX-57DDCT	40	5700	16,390

Please order suspension separately.

## PieLED

LM 78

Linear up-down light suspended LED luminaire



Cat No.	System Wattage (W)	CCT (K)	LP (₹)
LM78-401-XXX-57-XX/CT	26	5700	13,090
LM78-801-XXX-57-XX/CT	52	5700	26,190

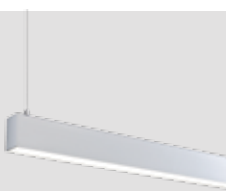
Please order suspension separately.



## AxeonLED

LM 34

Linear suspended up-down light, LED luminaire



Cat No.	System Wattage (W)	CCT (K)	LP (₹)
LM34-361-XXX-57-XX	29	5700	8,750
LM34-361-XXX-57-CT	29	5700	8,850
LM34-721-XXX-57-XX	58	5700	17,050
LM34-721-XXX-57-CT	58	5700	17,150

Please order suspension separately. Order product code with CT for end-to-end installation.

## Suspension for PieLED and AxeonLED



Universal suspension system with quick onsite adjustment: mounting with 2 nos. suspension from ceiling		LP (₹)
WX 861	Suitable for installation on RCC ceiling	590
LMX 341	Suitable for installation on RCC ceiling	590
WX 862	Suitable for installation on modular grid Armstrong (Prelude 24mm exposed suspension system)	690
WX 863	Suitable for installation on modular grid Armstrong (Silhouette 15mm)	690
LMX 342	Suitable for installation on modular grid Prelude 24mm ceiling system	690
LMX 343	Suitable for installation on modular grid Silhouette 15mm ceiling system	690

Suspension Series: WX86 is for PieLED | LMX34 is for AxeonLED

## AxeonLED

LM 34

Linear suspended down light, LED luminaire



Cat No.	System Wattage (W)	CCT (K)	LP (₹)
LM34-251-XXX-57-XX	20	5700	6,990
LM34-251-XXX-57-CT	20	5700	7,090
LM34-501-XXX-57-XX	40	5700	13,890
LM34-501-XXX-57-CT	40	5700	13,990

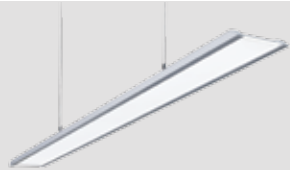
Please order suspension separately. Order product code with CT for end-to-end installation.

## Modern Workspaces • Suspended

### AsimlineLED

LM 77

The slimmest luminaire in class



Cat No.	System Wattage (W)	CCT (K)	LP (₹)
LM77-441-XXX-57-V1	32	5700	11,290
LM77-441-XXX-40-V1	32	4000	11,290

Please order suspension separately.

### LineosLED

LM 31

Linear suspended LED luminaire



Cat No.	System Wattage (W)	CCT (K)	LP (₹)
LM31-211-XXX-57-XX	21	5700	6,750
LM31-211-XXX-57-CT	21	5700	6,850
LM31-401-XXX-57-XX	32	5700	7,950
LM31-401-XXX-57-CT	32	5700	8,050

Please order suspension separately.

### Suspension for AsimlineLED



#### Universal suspension system with quick onsite adjustment: mounting with 2nos. suspension from ceiling

		LP (₹)
LMX 771	Suitable for installation on RCC ceiling	550
LMX 772	Suitable for installation on modular grid Armstrong Prelude ceiling	650
LMX 773	Suitable for installation on modular grid Armstrong silhouette ceiling	650

### Suspension for LineosLED



#### Universal suspension system with quick onsite adjustment: mounting with 2nos. suspension from ceiling

		LP (₹)
WX 861	Suitable for installation on RCC ceiling	590
WX 862	Suitable for installation on modular grid Prelude 24 mm ceiling system	690
WX 863	Suitable for installation on modular grid Silhouette 15mm ceiling system	690



### AxeonLED Surface

LM 34

Surface mounted linear LED luminaire



Cat No.	System Wattage (W)	CCT (K)	LP (₹)
LM34-251-XXX-57-SM	20	5700	8,290

## LH13 LED

LH 13  
Pendant mounted LED luminaire with  
spun aluminium reflector



Cat No.	System Wattage (W)	CCT (K)	LP (₹)
LH13-301-060-40-XX	32	4000	8,790
LH13-301-060-57-XX	32	5700	8,790

## OrbitLED

LM 71  
Circular suspended fully diffused  
LED luminaire



Cat No.	System Wattage (W)	CCT (K)	LP (₹)
LM71-341-XXX-40-XX	26	4000	10,290
LM71-441-XXX-40-XX	34	4000	11,850
LM71-341-XXX-57-XX	26	5700	10,290
LM71-441-XXX-57-XX	34	5700	11,850



## ComfortLED

LW 04  
Wall mounted personal LED luminaire



new

Cat No.	System Wattage (W)	CCT (K)	LP (₹)
LW04-411-XXX-57-XX	31	5700	7,590

Commercial Interiors • Downlighters

# Commercial Interiors

create the ambience



## HeliosLED

LD 90  
High performance recess mounted  
LED downlighter



Cat No.	System Wattage (W)	CCT (K)	LP (₹)
LD90-111-XXX-65-XX*	9	6500	1,390
LD90-141-XXX-65-XX*	12	6500	1,490
LD90-191-XXX-65-XX**	15	6500	1,590
LD90-231-XXX-65-XX***	18	6500	1,790

Cutout dimensions: \*Ø125 mm | \*\*Ø145 mm | \*\*\*Ø165 mm

## IrisLED

LD 71  
Recess mounted circular  
LED downlighter



Cat No.	System Wattage (W)	CCT (K)	LP (₹)
LD71-111-SMS-65-XX*	11	6500	1,590
LD71-161-SML-65-XX**	15	6500	1,690

Cutout dimensions: \*Ø110 mm | \*\*Ø145 mm

## HelixLED

LD 91  
Recess mounted circular  
LED downlighter



new

Cat No.	System Wattage (W)	CCT (K)	LP (₹)
LD91-141-XXX-65-XX	11	6500	1,690
LD91-201-XXX-65-XX	15	6500	1,890

Cutout dimensions: Ø165 mm

## IrisLED Gold RF

LD 71  
Recess mounted circular LED  
retrofit downlighter



Cat No.	System Wattage (W)	CCT (K)	LP (₹)
LD71-111-SML-65-RF	11	6500	1,850
LD71-161-SML-65-RF	15	6500	1,950

Cutout dimensions: Ø168 mm

## IrisLED Gold FD

LD 71  
Recess mounted LED downlighter  
with flushed diffuser



Cat No.	System Wattage (W)	CCT (K)	LP (₹)
LD71-111-SML-65-FD	11	6500	1,750
LD71-161-SML-65-FD	15	6500	1,850

Cutout dimensions: Ø145 mm

## IrisLED Gold DD

LD 71  
High efficiency LED downlighter with  
drop down diffuser



Cat No.	System Wattage (W)	CCT (K)	LP (₹)
LD71-111-SML-65-DD	11	6500	1,750
LD71-161-SML-65-DD	15	6500	1,850

Cutout dimensions: Ø145 mm

## Commercial Interiors • Downlighters

### IrisLED SQ

#### LD 74

High efficiency square LED downlighter



Cat No.	System Wattage (W)	CCT (K)	LP (₹)
LD74-101-XXX-65-XX*	11	6500	2,090
LD74-121-XXX-65-XX**	14	6500	2,190
LD74-151-XXX-65-XX***	16	6500	2,490

Cutout dimensions: \*97 mm x 97 mm | \*\*117 mm x 117 mm | \*\*\*137 mm x 137 mm

### Halo

#### CRDL 11

Recess mounted circular LED downlighter



Cat No.	System Wattage (W)	CCT (K)	LP (₹)
CRDL11R008HP57*	6	5700	1,950
CRDL11R013HP57*	9	5700	2,050
CRDL11R017HP57*	12	5700	2,250
CRDL11R023HP57*	18	5700	2,690
CRDL11R033HP57**	26	5700	4,650

Cutout dimensions: \*Ø172 mm | \*\*Ø220 mm

### Halo

#### CRDL 11

Surface mounted circular LED downlighter



Cat No.	System Wattage (W)	CCT (K)	LP (₹)
CRDL11S008HP57	6	5700	2,590
CRDL11S013HP57	9	5700	2,690
CRDL11S017HP57	12	5700	2,950
CRDL11S023HP57	18	5700	3,490
CRDL11S033HP57	26	5700	5,790

### SpherisLED

#### CRDL 10

Recess mounted circular LED downlighter



Cat No.	System Wattage (W)	CCT (K)	LP (₹)
CRDL10R005HP60*	6	6000	990
CRDL10R010HP60**	11	6000	1,390
CRDL10R015HP60***	17	6000	1,790

Cutout dimensions: \*Ø90 mm | \*\*Ø115 mm | \*\*\*Ø140 mm



LED is an ever improving & evolving technology. Wipro is committed to bring you the best in LED technology.



## LED Gimball

LD 56  
Circular gimball luminaire



Cat No.	System Wattage (W)	CCT (K)	LP (₹)
LD56-251-060-40-XX*	20	4000	3,850
LD56-381-060-40-XX**	32	4000	5,150
LD56-501-060-40-XX**	41	4000	4,450

Also available in beam angles: 16°, 24°, 36°  
Cutout dimensions: \*Ø115 mm | \*\*Ø135 mm

## LED Gimball

LD 58  
Square gimball luminaire



Cat No.	System Wattage (W)	CCT (K)	LP (₹)
LD58-251-060-40-XX*	20	4000	3,850
LD58-381-060-40-XX**	32	4000	5,150
LD58-501-060-40-XX**	41	4000	4,450

Also available in beam angles: 16°, 24°, 36°  
Cutout dimensions: \*95 mm x 95 mm | \*\*135 mm x 135 mm | \*\*\*150 mm x 150 mm  
Available in twin & triple head options.

## LED Swivel Projector

LD 59  
Circular adjustable/rotatable  
downlight luminaire



Cat No.	System Wattage (W)	CCT (K)	LP (₹)
LD59-251-036-40-XX*	20	4000	5,490
LD59-381-036-40-XX**	32	4000	6,590
LD59-501-036-40-XX**	41	4000	9,250

Also available in beam angles: 16°, 24°, 60°  
Cutout dimensions: \*Ø110 mm | \*\*Ø140 mm | \*\*\* Ø165 mm

## LED Tracklight

LD 57  
LED Track Light



Cat No.	System Wattage (W)	CCT (K)	LP (₹)
LD57-251-036-40-XX	20	4000	4,950
LD57-381-036-40-XX	32	4000	5,250
LD57-501-036-40-XX	41	4000	6,290

Also available in beam angles: 24°, 60°  
Please order suitable accessories as below.

Cat No.		LP (₹)
XTS-5100	Single phase 1 mtr track	1,190
XTS-5200	Single phase 2 mtr track	2,390
XTS 52	Straight connector	290
SKB520	2 mtr single suspension	590



For all available correlated colour temperatures (CCT) and beam angles, LP remains the same. 15

Lighting Controls

# Lighting Controls

cost, convenience & comfort



## eSavvy

CRPS 10  
Smart PIR occupancy sensor



Cat No.		LP (₹)
CRPS10R010A	Passive Infrared Sensor	4,090

Cutout dimensions: Ø72 mm

## eSavvy

CRPS 13  
PIR sensor switching photocell



Cat No.		LP (₹)
CRPS13R010A	Programmable Occupancy Sensor	5,990

Cutout dimensions: Ø72 mm

## eSavvy

CRAD  
High performance programmable PIR  
occupancy sensor with daylight dimming



Cat No.		LP (₹)
CRADDPS10R010A	Occupancy sensor with daylight dimming suitable for 1-10V analogue ballast	8,090

Cutout dimensions: Ø72 mm

## eSense

COM 20/CDA 21  
High performance programmable PIR  
occupancy sensor with daylight dimming



Cat No.		LP (₹)
COM 20010	Occupancy sensor	14,990
CDA 21010	Occupancy sensor with daylight dimming suitable for 1-10V analogue ballast	16,890

Cutout dimensions: Ø60 mm

## eSense

COM 23/CDA 24  
High performance microwave occupancy  
and daylight dimming sensors



Cat No.		LP (₹)
COM 23010	Occupancy sensor	12,590
CDA 24010	Occupancy sensor with daylight dimming suitable for 1-10V analogue ballast	13,590

Cutout dimensions: Ø60 mm

## eSense

CRADSS11/CRADSS12  
CRADSS13  
Scene select system



4 channel scene select

Cat No.		LP (₹)
CRADSS11R010A	1 channel scene select	29,990
CRADSS12R020A	2 channel scene select	50,990
CRADSS13R040A	4 channel scene select	91,690

Cleanroom & Sterile areas

# Cleanroom & Sterile Areas

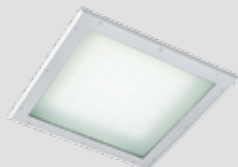
clean and pure light for  
zero error zones



## VisionLED BOCR

### LC 20

Recess mounted, bottom opening  
cleanroom LED luminaire



Cat No.	System Wattage (W)	CCT (K)	LP (₹)
LC20-411-XXX-57-XX*	30	5700	8,150
LC20-551-XXX-57-XX**	42	5700	9,350
LC20-721-XXX-57-XX**	60	5700	10,750

Cutout dimensions: \*490 mm x 490 mm | \*\*580 mm x 580 mm

## VisionLED Prime TOCR

### LC 30

Best-in-class top opening  
cleanroom luminaire



Cat No.	System Wattage (W)	CCT (K)	LP (₹)
LC30-411-XXX-57-G1	30	5700	9,550
LC30-551-XXX-57-G1	42	5700	10,290
LC30-721-XXX-57-G1	60	5700	10,990
LC30-102-XXX-57-G1	78	5700	14,390
TFTC100*	-	-	4,190

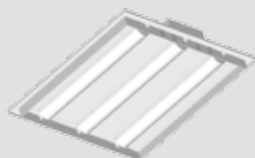
\*Top frame & top cover (TFTC) to be ordered separately.

Cutout dimensions: 600 mm x 600 mm

## VisionLED Retrofit

### HC 30

Suitable for retrofit solution



Cat No.	System Wattage (W)	CCT (K)	LP (₹)
HC30-411-XXX-57-XX	31	5700	6,590
HC30-551-XXX-57-XX	42	5700	8,990



## Leaders in cleanroom lighting

### Dedicated team of cleanroom lighting specialists

VisionLED range is designed and developed by technical experts with a sound understanding of a cleanroom

### Conformity to international standards

VisionLED range conforms to international guidelines for  
USFDA - Food and Drug Administrative Procedures and  
GMP - Good Manufacturing Practices

### Design and develop customised solutions

Over the years, we have designed and developed more than 750 customised product variants catering to the ever-evolving needs of Pharmaceutical, Food & Beverages and Electronics & Semi Conductor Industries

### More than 20 years of experience

Today, most leading companies choose VisionLED luminaires as the preferred choice for their cleanrooms

### Over 2000 successful installations

With as many as 2000 successful installations, VisionLED is uniquely positioned as the leader in cleanroom lighting

For any queries on cleanroom lighting applications, contact our nearest branch or write to [helpdesk.lighting@wipro.com](mailto:helpdesk.lighting@wipro.com)

Industries

# Industries

enhanced efficiency with  
effective savings



## XpressbayLED

LH 15  
Linear LED highbay suspended luminaire



new

Cat No.	System Wattage (W)	CCT (K)	LP (₹)
LH15-102-060-57-XX	75	5700	16,990
LH15-142-060-57-XX	100	5700	21,990
LH15-182-060-57-XX	130	5700	29,990
LH15-282-060-57-XX	200	5700	43,990

Also available in 90° beam angle.  
Please order suspension separately.

## RadialLED Prime

LH 09  
Integral SMD LED highbay luminaire with aluminium reflector



Cat No.	System Wattage (W)	CCT (K)	LP (₹)
LH09-102-060-50-G1	80	5000	13,490
LH09-122-060-50-G1	100	5000	16,990
LH09-172-060-50-G1	140	5000	20,190
LH09-232-060-50-G1	200	5000	25,290

Also available in 100° beam angle.

## Wellglass Luminaire

LE 02  
IP65 LED wellglass luminaire



new

Cat No.	System Wattage (W)	CCT (K)	LP (₹)
LE02-441-XXX-57-OP	35	5700	5,500
LE02-821-XXX-57-OP	70	5700	7,500

Also available in clear glass and glass with mesh.

## Canopy Luminaire

LH 14  
High efficiency LED mid/highbay canopy luminaire



Cat No.	System Wattage (W)	CCT (K)	LP (₹)
LH14-102-XXX-57-XX	80	5700	12,590
LH14-192-XXX-57-XX	150	5700	23,590

## RadialLED

LH 09  
Rugged LED midbay and highbay for varied industrial applications



Cat No.	System Wattage (W)	CCT (K)	LP (₹)
LH09-851-060-50-V5	65	5000	12,690
LH09-921-060-50-V5	80	5000	14,890
LH09-132-060-50-V5	100	5000	18,690
LH09-122-060-50-V5	120	5000	20,390
LH09-192-060-50-V5	135	5000	22,190
LH09-212-060-50-V5	165	5000	26,090
LH09-262-060-50-V5	200	5000	29,990

Also available in 90° beam angle.

## StormLED

LE 02  
IP65 high efficiency LED wellglass

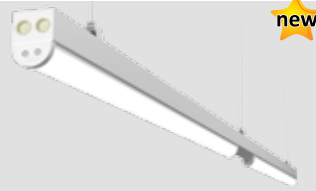


Cat No.	System Wattage (W)	CCT (K)	LP (₹)
LE02-391-XXX-65-XX	29	6500	5,150
LE02-521-XXX-65-XX	40	6500	5,590

## Industries

### XlineLED Pro

LE 14  
IP54 trunk mounted LED luminaire



new

Cat No.	System Wattage (W)	CCT (K)	LP (₹)
LE14-491-XXX-57-XX	39	5700	7,790

Please order trunk separately.

### Trunk for XlineLED Pro

Trunk pre-wired with internal wiring and suspension system

new

Cat No.	Length	LP (₹)
LE14A02C	1.2 mtr extruded aluminium	2,190

### XlineLED

LE 11  
Trunk mounted LED luminaire



Cat No.	System Wattage (W)	CCT (K)	LP (₹)
LE11-491-XXX-57-XX	39	5700	4,250

Please order trunk separately.

### Trunk for XlineLED

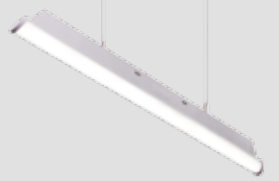
Trunk pre-wired with internal wiring and suspension system

Cat No.	Length	LP (₹)
WCX21770	1.77 mtr	2,390
WCX23540	3.54 mtr	4,190



## XlineLED

LE 10  
Industrial integral LED channel



Cat No.	System Wattage (W)	CCT (K)	LP (₹)
LE10-491-XXX-57HCSL	39	5700	4,250

## CapsuleLED

LE 20  
Surface/pendant mounted  
totally enclosed LED luminaire



Cat No.	System Wattage (W)	CCT (K)	LP (₹)
LE20-491-XXX-57-XX	39	5700	5,350



Outdoor • Street Lighting

# Street Lighting

safe and vibrant outdoors





## SkylineLED

LR 02  
High performance IP66 LED streetlight



Cat No.	System Wattage (W)	CCT (K)	LP (₹)
LR02-291-XXX-57-XX	25	5700	3,090
LR02-331-XXX-57-XX	30	5700	3,390

## SkylineLED

LR 02  
High performance IP66 LED streetlight



Cat No.	System Wattage (W)	CCT (K)	LP (₹)
LR02-451-XXX-57-G1	40	5700	5,990
LR02-501-XXX-57-G1	45	5700	6,290

## SkylineLED

LR 02  
High performance IP66 LED streetlight



Cat No.	System Wattage (W)	CCT (K)	LP (₹)
LR02-391-XXX-57-XX	35	5700	5,590
LR02-451-XXX-57-XX	40	5700	6,390
LR02-501-XXX-57-XX	45	5700	6,690

## SkylineLED

LR 02  
High performance IP66 LED streetlight



Cat No.	System Wattage (W)	CCT (K)	LP (₹)
LR02-671-XXX-57-XX	60	5700	8,890
LR02-781-XXX-57-XX	70	5700	9,190
LR02-981-XXX-57-XX	80	5700	11,090
LR02-102-XXX-57-XX	90	5700	11,490
LR02-112-XXX-57-XX	100	5700	11,890
LR02-122-XXX-57-XX	110	5700	12,390
LR02-132-XXX-57-XX	120	5700	16,090

## SkylineLED

LR 02  
High performance IP66 LED streetlight



Cat No.	System Wattage (W)	CCT (K)	LP (₹)
LR02-172-XXX-57-XX	135	5700	16,790
LR02-182-XXX-57-XX	150	5700	23,590
LR02-212-XXX-57-XX	180	5700	26,890
LR02-242-XXX-57-XX	200	5700	28,290
LR02-262-XXX-57-XX	220	5700	28,790
LR02-292-XXX-57-XX	250	5700	31,890



Outdoor • Flood Lighting

# Flood Lighting

safe and vibrant outdoors





## AlphaLED Floodlight

LF 19  
LED floodlight luminaire



Cat No.	System Wattage (W)	CCT (K)	LP (₹)
LF19-711-060-57-XX	60	5700	9,590
LF19-931-060-57-XX	80	5700	10,890

## AlphaLED Floodlight

LF 20  
LED floodlight luminaire



new

Cat No.	System Wattage (W)	CCT (K)	LP (₹)
LF20-122-060-57-XX	100	5700	14,790
LF20-132-060-57-XX	120	5700	15,590
LF20-192-060-57-XX	150	5700	20,490

## AlphaLED Floodlight

LF 20  
LED floodlight luminaire



new

Cat No.	System Wattage (W)	CCT (K)	LP (₹)
LF20-272-060-57-XX	200	5700	29,390
LF20-342-060-57-XX	250	5700	38,590
LF20-392-060-57-XX	300	5700	45,990
LF20-442-060-57-XX	350	5700	48,990

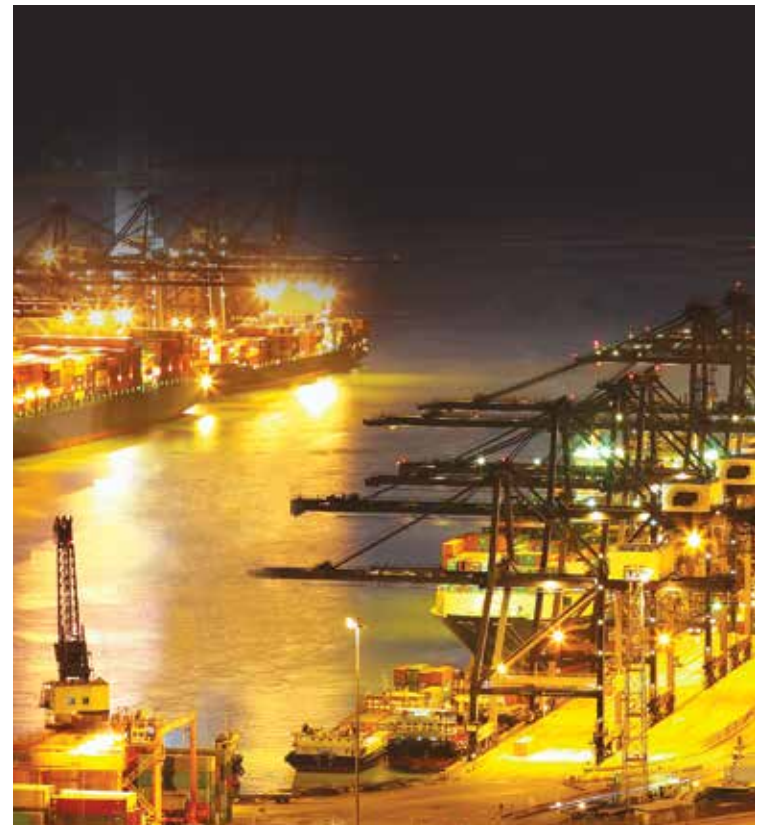
## RevoLED Floodlight

LF 07  
High efficiency LED floodlight luminaire



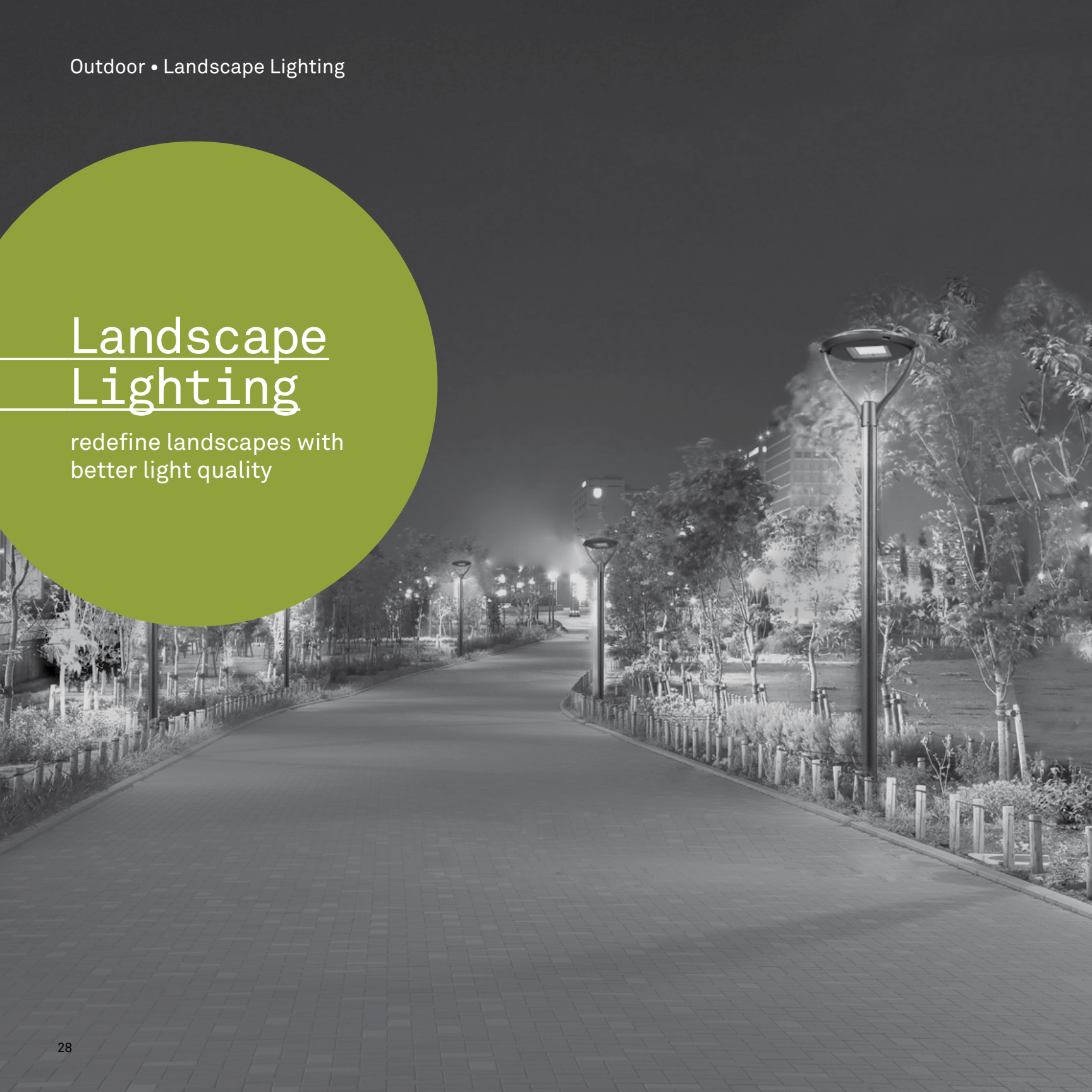
Cat No.	System Wattage (W)	CCT (K)	LP (₹)
LF07-102-060-50-V5	100	5000	18,290
LF07-122-060-50-V5	120	5000	18,790
LF07-152-060-50-V5	150	5000	28,890
LF07-282-060-50-V5	200	5000	31,390
LF07-272-060-50-V5	250	5000	41,490
LF07-472-060-50-V5	350	5000	52,990
LF07-582-060-50-V5	415	5000	59,990

Also available in beam angle: 90° | Please order appropriate beam angle after discussion with Wipro team.



# Landscape Lighting

redefine landscapes with  
better light quality





## UrbanoLED Pathway

LP 05  
IP66 LED pathway luminaire



Cat No.	System Wattage (W)	CCT (K)	LP (₹)
LP05-711-XXX-65-XX	60	6500	39,990

## UrbanoLED Pathway

LP 06  
IP66 LED pathway luminaire



Cat No.	System Wattage (W)	CCT (K)	LP (₹)
LP06-351-XXX-57-XX	35	5700	23,190

## Post TopLED

LP 02  
IP65 aesthetically appealing  
vintage LED post top



Cat No.	System Wattage (W)	CCT (K)	LP (₹)
LP02-501-XXX-57-XX	45	5700	13,290

## FantasyLED Bollard

CRLA 11  
IP65 LED bollard suitable for  
landscape lighting



Cat No.	System Wattage (W)	CCT (K)	LP (₹)
CRLA11008HP57-05	8	5700	6,990
CRLA11008HP57-08	8	5700	7,090

## GardeniaLED

LF 05  
IP67 integral LED bushlight



Cat No.	System Wattage (W)	CCT (K)	LP (₹)
LF05-450-024-27-XX	6	2700	5,090
LF05-450-036-27-XX	6	2700	5,090
LF05-450-055-27-XX	6	2700	5,090
LF05-600-024-27-XX	8	2700	5,890
LF05-600-036-27-XX	8	2700	5,890
LF05-600-055-27-XX	8	2700	5,890



Cleanray

# Cleanray

range of energy efficient and  
high performance led luminaires



## ElateLED

### CRCO 10

Recess mounted LED luminaire with complete diffuser



Cat No.	System Wattage (W)	CCT (K)	MRP (₹)
CRCO10R038HP57GL	36	5700	4,790

Frame to be ordered separately for installation in POP/gypsum ceiling.  
Catalogue no. for frame is 9180P01089 LP Rs. 590 | Cutout dimension: 608 mm x 608 mm

## ImmaculateLED Slim

### CRCO 23

Recess mounted slim LED luminaire



Cat No.	System Wattage (W)	CCT (K)	MRP (₹)
CRCO23R036HP65G1	36	6500	4,590

Frame to be ordered separately for installation in POP/gypsum ceiling.  
Catalogue no. for frame is 9180P01089 LP Rs. 590 | Cutout dimension: 608 mm x 608 mm

## IrisLED Slim RO

### LD 80

Recessed mounted round slim panel LED downlighter



Cat No.	System Wattage (W)	CCT (K)	MRP (₹)
LD80-200-XXX-60-XX*	3	6000	490
LD80-350-XXX-60-XX**	6	6000	890
LD80-530-XXX-60-XX***	9	6000	950
LD80-101-XXX-60-XX****	12	6000	1,250
LD80-131-XXX-60-XX*****	15	6000	1,350
LD80-171-XXX-60-XX*****	18	6000	2,050

Cutout dimensions: \*Ø75 mm | \*\*Ø108 mm | \*\*\*Ø135 mm | \*\*\*\*Ø157 mm | \*\*\*\*\*Ø178 mm |  
\*\*\*\*\*Ø205 mm

## IrisLED Slim SQ

### LD 81

Recess mounted square slim LED luminaire



Cat No.	System Wattage (W)	CCT (K)	MRP (₹)
LD81-200-XXX-60-XX*	3	6000	490
LD81-350-XXX-60-XX**	6	6000	890
LD81-530-XXX-60-XX***	9	6000	950
LD81-101-XXX-60-XX****	12	6000	1,250
LD81-131-XXX-60-XX*****	15	6000	1,350
LD81-171-XXX-60-XX*****	18	6000	2,050
LD81-200-XXX-60-XX*****	24	6000	3,290

Cutout dimensions: \*75 mm x 75 mm | \*\*108 mm x 108 mm | \*\*\*135 mm x 135 mm |  
\*\*\*\*157 mm x 157 mm | \*\*\*\*\*178 mm x 178 mm | \*\*\*\*\*205 mm x 205 mm |  
\*\*\*\*\*279 mm x 279 mm

## IrisLED Slim RO/SQ SM

### LD 80/81

Surface mounted round/square slim panel LED downlighter

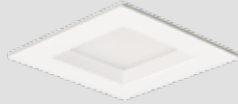


Cat No.	System Wattage (W)	CCT (K)	MRP (₹)
LD80-350-XXX-60-SM	6	6000	1,050
LD80-101-XXX-60-SM	12	6000	1,490
LD80-171-XXX-60-SM	18	6000	2,390
LD81-350-XXX-60-SM	6	6000	1,050
LD81-101-XXX-60-SM	12	6000	1,490
LD81-171-XXX-60-SM	18	6000	2,390

## SquarisLED

CRDL 15

Recess mounted square slim  
LED luminaire



Cat No.	System Wattage (W)	CCT (K)	MRP (₹)
CRDL15R005HP60*	6	6000	990
CRDL15R010HP60**	11	6000	1,390
CRDL15R015HP60***	17	6000	1,790

Cutout dimensions: \*90 mm x 90 mm | \*\*115 mm x 115 mm | \*\*\*140 mm x 140 mm

## SlimrisLED

CRDL 14

Recess mounted circular  
slim LED luminaire



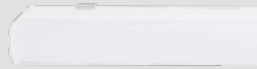
Cat No.	System Wattage (W)	CCT (K)	MRP (₹)
CRDL14R005HP60*	6	6000	990
CRDL14R010HP60**	11	6000	1,390
CRDL14R015HP60***	17	6000	1,790

Cutout dimensions: \*Ø90 mm | \*\*Ø115 mm | \*\*\*Ø140 mm

## TrimLED NEO

LL 20

LED batten suitable for  
indoor applications



Cat No.	System Wattage (W)	CCT (K)	MRP (₹)
LL20-111-XXX-65-NE	10	6500	550
LL20-221-XXX-65-NE	18	6500	850

## TrimLED

LL 20

High efficiency LED  
aluminum linear batten



new

Cat No.	System Wattage (W)	CCT (K)	MRP (₹)
LL20-281-XXX-65AL1	20	6500	1,390

## ProLED

LL 13

High efficiency LED linear lamp



Cat No.	System Wattage (W)	CCT (K)	MRP (₹)
LL13-181-650	18	6500	990
LL13-181-65SE	20	6500	1,150

## ProLED T5

LL 13

High efficiency LED linear T5 lamp



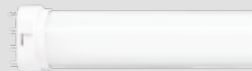
new

Cat No.	System Wattage (W)	CCT (K)	MRP (₹)
LL13-181-65-T5	18	6500	1,290



## ProLED Compact

LL 18  
High efficiency LED compact lamp



Cat No.	System Wattage (W)	CCT (K)	MRP (₹)
LL18-181-65PL	18	6500	1,050

## WIOLED

WIO 92  
Channel suitable for ProLED lamp



Cat No.	System Wattage (W)	MRP (₹)
WIO 921208	Single 4 feet LED lamp	490
WIO 922208	Twin 4 feet LED lamp	590

Please order suitable ProLED tube separately.

## SkylineLED

LR 02  
High performance IP66 LED streetlight



Cat No.	System Wattage (W)	CCT (K)	MRP (₹)
LR02-261-XXX-57-XX	20	5700	2,550

## FormzLED

LS 06  
IP20 non-integral flexible LED striplight



Cat No.	System Wattage (W)	CCT (K)	MRP (₹)
LS06-005-120-WH-50	5	-	1,590
LS06-005-120-WW-50	5	-	1,590
LS06-015-120-WH-50	15	-	2,290
LS06-015-120-WW-50	15	-	2,290
LG40-024	-	-	790
LG40-078	-	-	1,490

\*LG40-024 - 1 unit is suitable for 1 no (5m spool) of LS06-005 | \*\*LG40-78 - 1 unit is suitable for 1 no (5m spool) of LS06-15 | \*Order drive separately. Driver is for indoor use only.

## AlphaLED Floodlight

LF 19  
Integral high performance LED floodlight



Cat No.	System Wattage (W)	CCT (K)	MRP (₹)
LF19-471-060-57-XX	40	5700	7,090

## MoonLED

LW 01/02  
Circular/square LED wall/ceiling light



Cat No.	System Wattage (W)	CCT (K)	MRP (₹)
LW01-101-XXX-57-XX*	9	5700	2,350
LW02-101-XXX-57-XX**	9	5700	2,350

Frame dimensions: \*Ø210 mm | \*\*270 mm x 270 mm

For all available correlated colour temperatures (CCT) and beam angles, MRP remains the same. 33

## Items to be phased-out (available till stocks last)

Series	Cat No.	List price (₹)
TuboLED	LM70-421-XXX-57-XX	11,350
	LM70-421-XXX-WW-XX	11,350
Suspension for TuboLED	WVX501	590
	WVX502	690
	WVX503	690
RetroLED	LM75-301-XXX-40-XX	11,790
eSense	CSC2202 + CDX2202	on request
	CIC01	on request
	CCX01	on request
SkylineLED	LR02-171-XXX-57-XX	3,350

## Terms and conditions

- Prices are in Indian rupees.
- LP/MRP are inclusive of GST. However authorized Wipro sales person/stockists can sell below the LP/MRP.
- All prices are subject to Wipro's general terms & conditions of business.
- Prices are subject to change without notice as per company discretion.
- This price list supersedes all earlier price lists.
- Company reserves the right to issue amendments, which may arise due to any errors in the price list.
- Goods are dispatched by us on purchaser's risk. All claims for loss, damage or shortage will be filed by the purchasers directly with the carriers.
- Orders should be placed in multiples of case lot.
- All orders shall be placed in writing.
- Items other than those included in the price list, stands phased out from the range.
- All fixtures will be supplied as per our normal specifications, for additional features please contact nearest Wipro office for details.
- Disputes, if any are subject to Pune jurisdiction only.

Innovation and improvement are a way of life at Wipro. All rights reserved.  
Reproduction of this data in part or in whole without permission is prohibited.  
Care has been taken to ensure that the information content within is correct.  
We reserve the right to modify the product without prior intimation.  
Photographs shown herein are indicative.  
Customers are advised to reconfirm the data or product dimensions before purchase with our local office.



## Branch Offices

E-40/7, Okhla Industrial Area, Phase-II,  
**New Delhi** - 110 020  
Tel: 011-4170 8121/29

No.139, 7th Cross, N S Palya, off. Bannerghatta Road,  
**Bangalore** - 560 076  
Tel: 080-4150 3260

3, Pretoria Street, 3rd floor,  
**Kolkata** - 700 071  
Tel: 033-4404 5886/87

Plot No.,13 A/1, Road No. 9, IDA East Division Nacharam, R.R.Dist.,  
**Hyderabad** - 500 076  
Tel: 040-2717 6082

1401/1402, 14 Floor, C-wing Lotus Corporate Park, Goregaon (East)  
**Mumbai** - 400 083  
Tel: 022-6218 2000

Economist House, S-15, First Cross Road,  
Thiru Vi Ka Industrial Estate, Guindy  
**Chennai** - 600 032  
Tel: 95660 86333

Bhosale Heights, 1195/5, Fergusson College Road,  
**Pune** - 411 005  
Tel: 020-2553 5081

S.C.O. - 208 - 209, 3rd Floor Sector - 34 A,  
**Chandigarh** - 160 022  
Tel: 0172-5001 8734

E/149, Transport Nagar, Lucknow Kanpur Road,  
**Lucknow** - 226 012  
Tel: 0522-2434 352

H-409, Titanium City Centre, 100 ft. Road, Anand Nagar  
**Ahmedabad** - 380 015  
Tel: 079-4007 3546

Khasra No.48.49/2, khedia Business Park, Tatibanth  
**Raipur (CG)** - 492 099  
Tel: 0771-3265 725

1-99, Sirigudi Nagar, Yendada  
**Vishakhapatnam** - 530 045  
Tel: 96769 08080/99449 825284

No.41, Chokkampudur Main Road, Sriram Nagar, Telungupalayam Post,  
**Coimbatore** - 641 039  
Tel: 98947 95836

B - 16/17, Palsania Complex, Near T B Hospital,  
Subhash Nagar Shopping Centre,  
**Jaipur** - 320 016  
Tel: 0141-2280 014/4910 879

311, Pujer Complex, Subhanpura,  
**Baroda** - 390 023  
Tel: 0265-2395 830/35/36/41/45

United Compound, A.B. Road, Dewas Naka,  
**Indore (MP)** - 452 010  
Tel: 98279 99668

Hindustan Associates, Plot no. 135,  
Mancheshwar Industrial Estate, Rasulgarh,  
**Bhubaneshwar** - 751 010  
Tel: 0674-6450 804

Flat No. 8, Plot No. 191, 1st Floor, Rachna Apartment,  
Cement Road, Shivaji Nagar,  
**Nagpur** - 440 010  
Tel: 0712-2569 878

VI/409-D, Valomkottil Building,  
Opp. BMC, Sea Port-Air Port Road, P.O. Thrikkakkara,  
**Cochin** - 682 021  
Tel: 98957 08464

## Wipro Lighting Advantage

### Innovative lighting solutions for indoor and outdoor applications through:

- Energy saving solutions with latest international technologies
- Capability to service multi-locational accounts
- Service commitment: 19 branches and over 350 dedicated stockists
- Ease of contact through website
- Trustworthiness and reliability of Wipro



Scan the QR code to download the app



#### Business Office:

Wipro Lighting, 5<sup>th</sup> floor, Godrej Eternia - C,  
Old Pune-Mumbai Highway, Shivajinagar, Pune - 411 005  
Tel: 020-66098700, Fax: 020-66098777  
E-mail: helpdesk.lighting@wipro.com

#### Registered Office:

Wipro Enterprises (P) Limited, 'C' Block, CCLG Division,  
Doddakannelli, Sarjapur Road, Bangalore - 560035, India.

Toll-free no: 1800-425-1969

[www.wiprolighting.com](http://www.wiprolighting.com)

Follow us on [LinkedIn](#)

Authorised Stockist